

Inspiration^{LE}

DOUBLE WIDE HOMES
THE STANDARD IN AFFORDABLE LUXURY



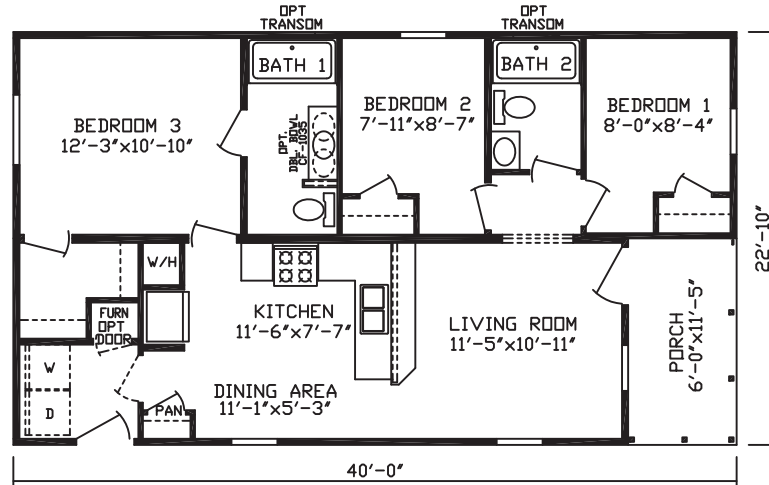
CavcoNappanee.com

24 WIDES
Inspiration^{LE}

BURBANK

MODEL 24032

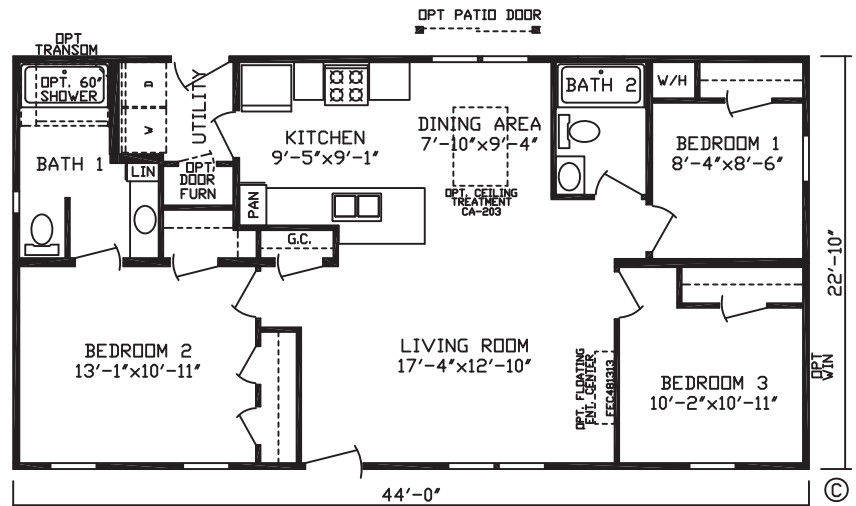
3 BR | 2 Bath | 845 sq ft

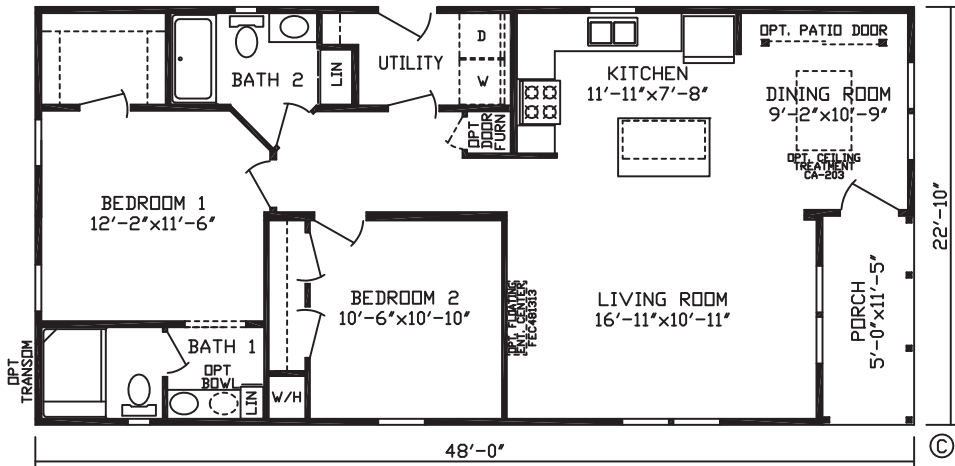


SULLIVAN

MODEL 24017

3 BR | 2 Bath | 1,004 sq ft

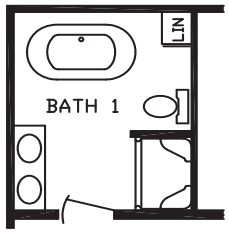




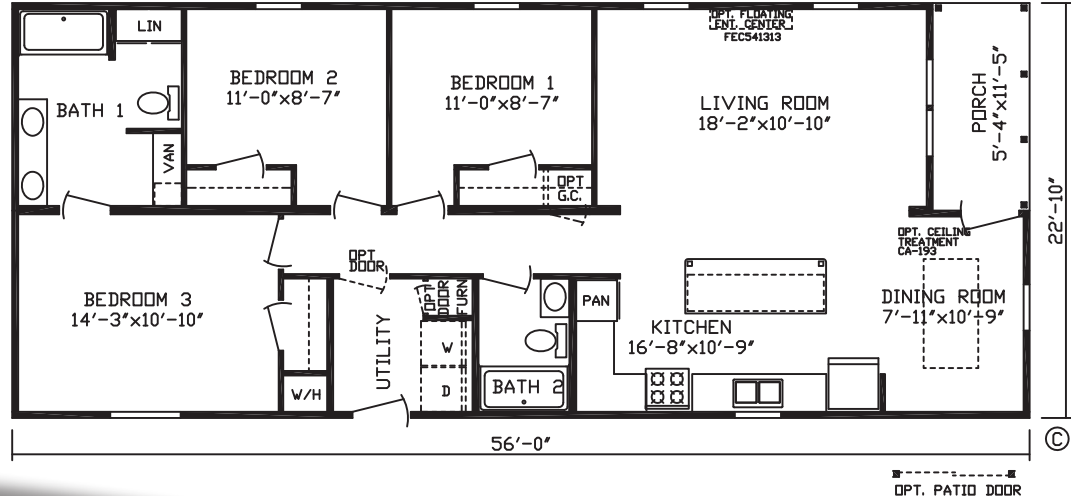
MCCARTNEY
MODEL 24014
 2 BR | 2 Bath | 1,039 sq ft



BAUER
MODEL 24008
 3 BR | 2 Bath | 1,218 sq ft

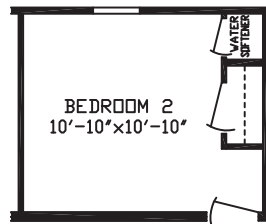


RO1 Opt Bath 1



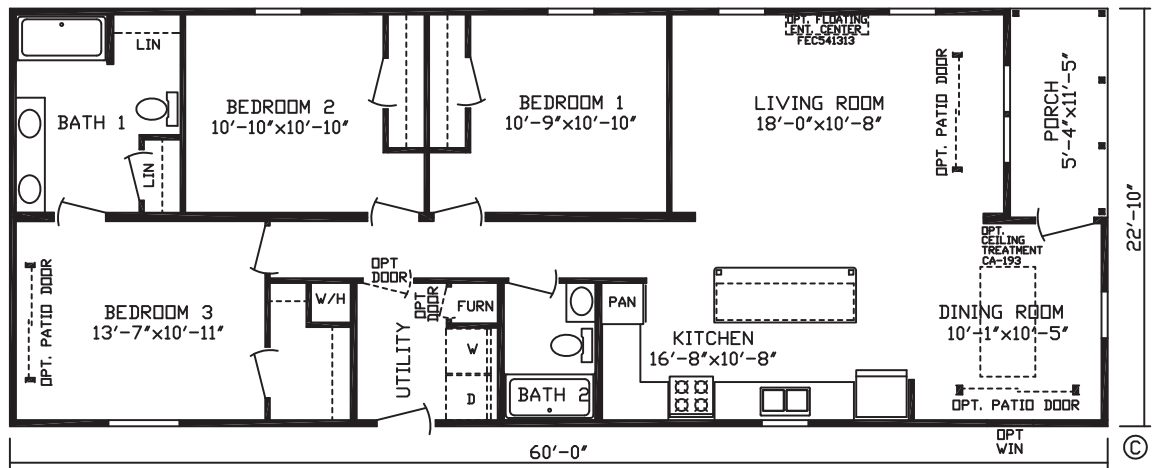
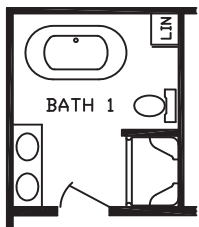
24 WIDES
Inspiration^{LE}

SCHMIDT
 MODEL 24003
 3 BR | 2 Bath | 1,309 sq ft



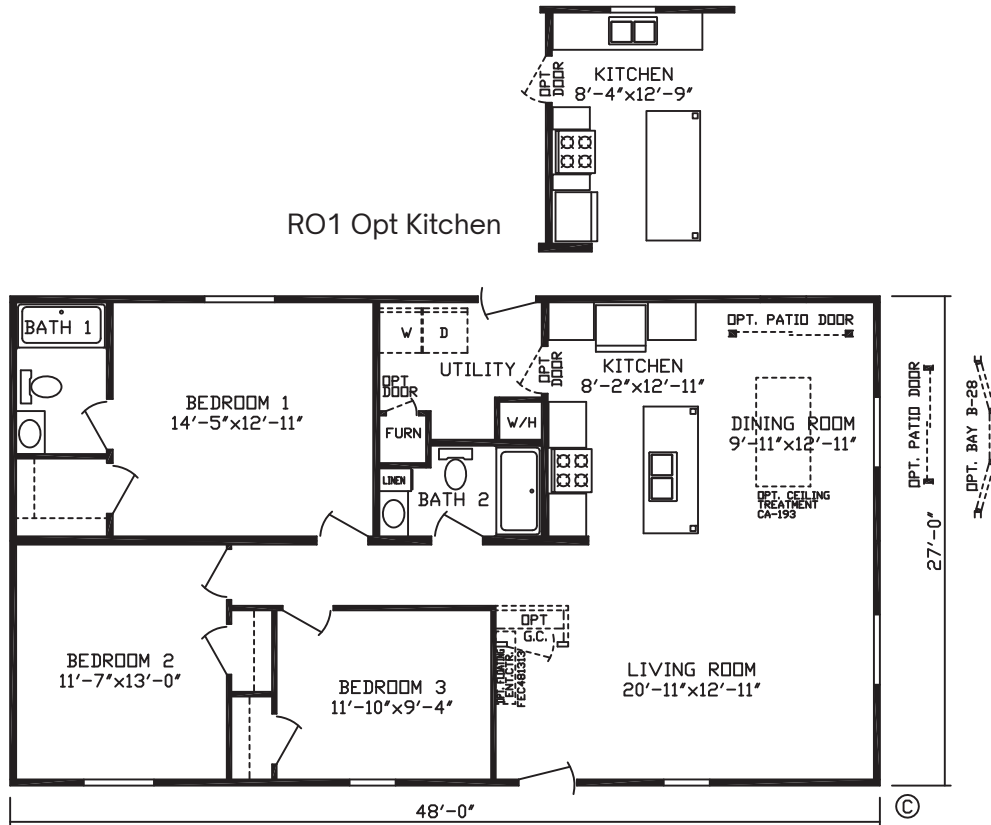
RO1 Opt Bath 1

RO3 Opt W/S



28 WIDES
Inspiration^{LE}

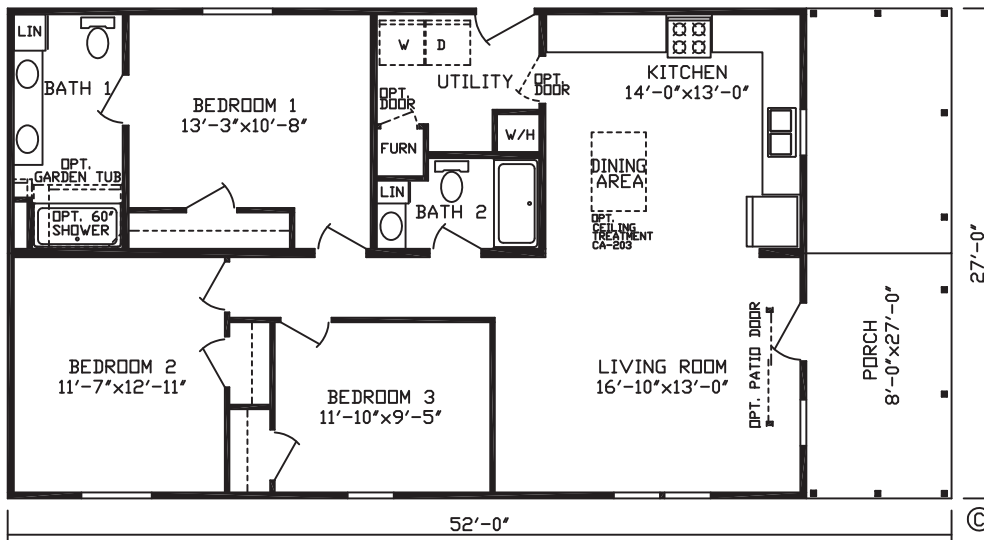
QUINCY
MODEL 24005
3 BR | 2 Bath | 1,296 sq ft



BACH

MODEL 24002

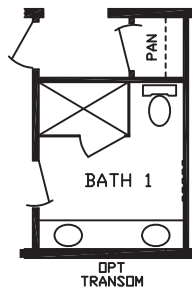
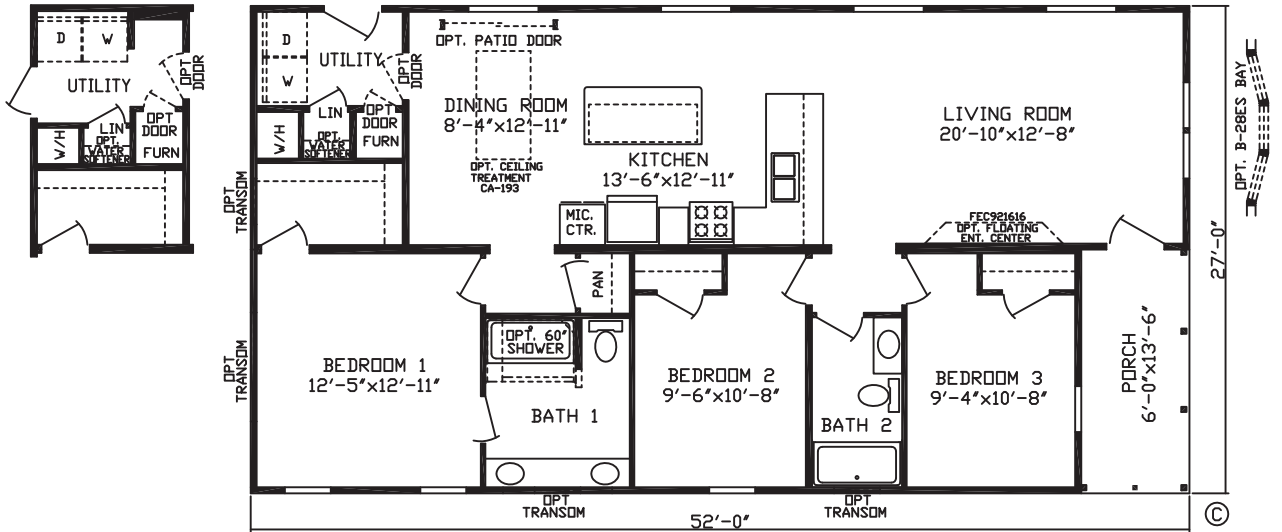
3 BR | 2 Bath | 1,188 sq ft



28 WIDES
Inspiration^{LE}

FULTON
 MODEL 24028
 3 BR | 2 Bath | 1,324 sq ft

RO1 Opt Utility



RO2 Opt Bath 1

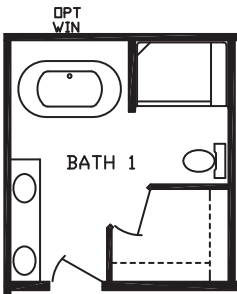
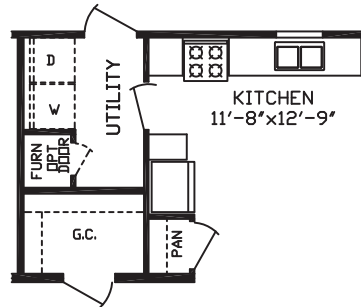


PORTMAN

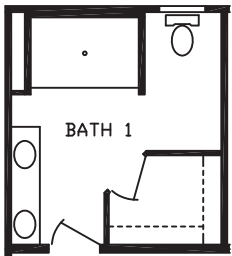
MODEL 24018

3 BR | 2 Bath | 1,404 sq ft

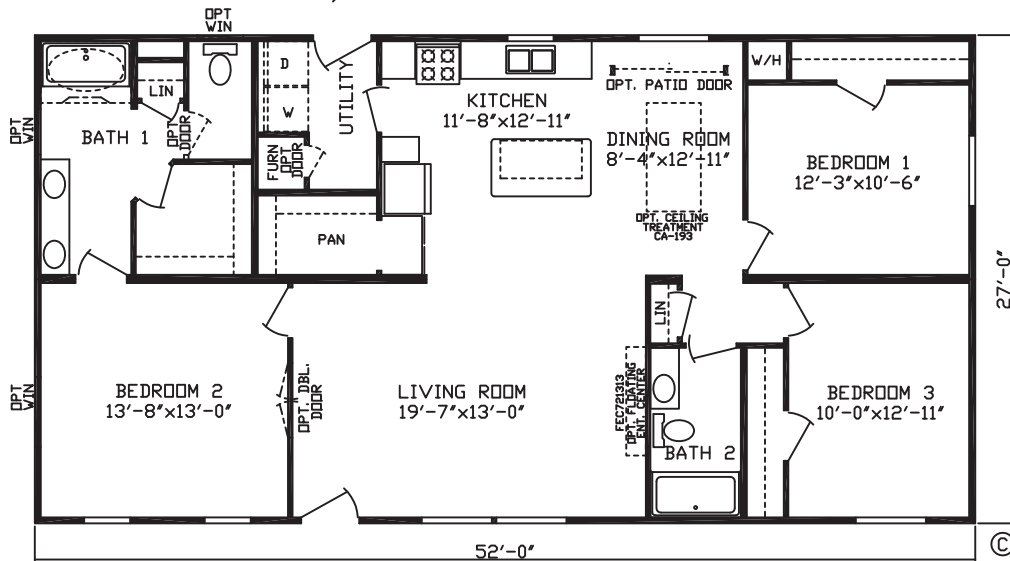
RO1 Opt Guest Closet



RO2 Opt Bath 1



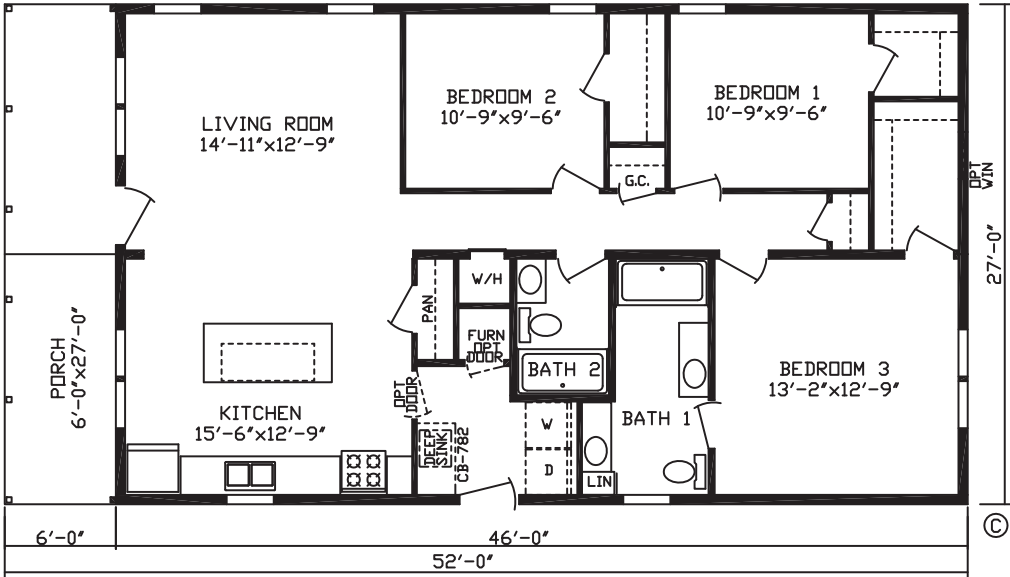
RO3 Opt Bath w/72" Tile Shower



TIMBERLAKE

MODEL 24035

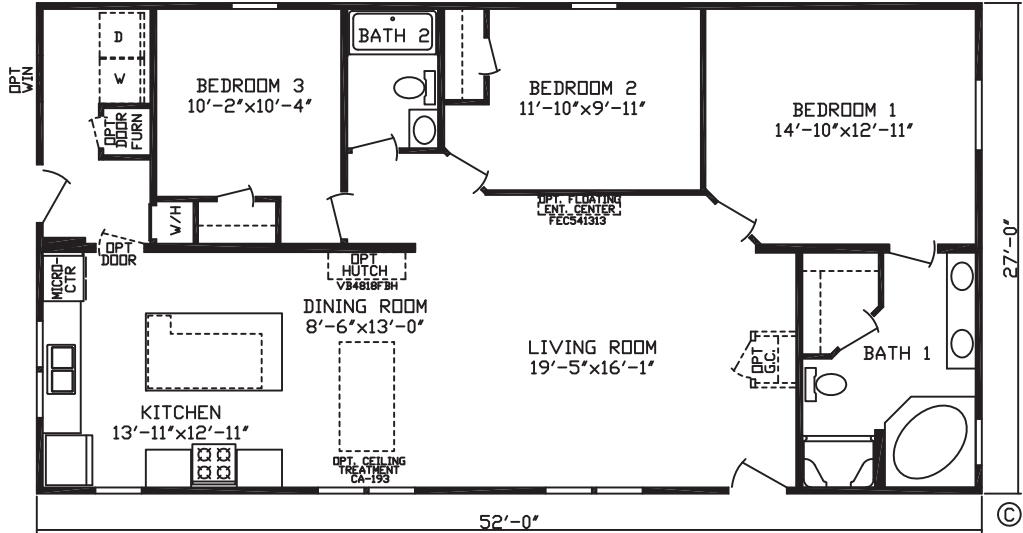
3 BR | 2 Bath | 1,242 sq ft



JOPLIN

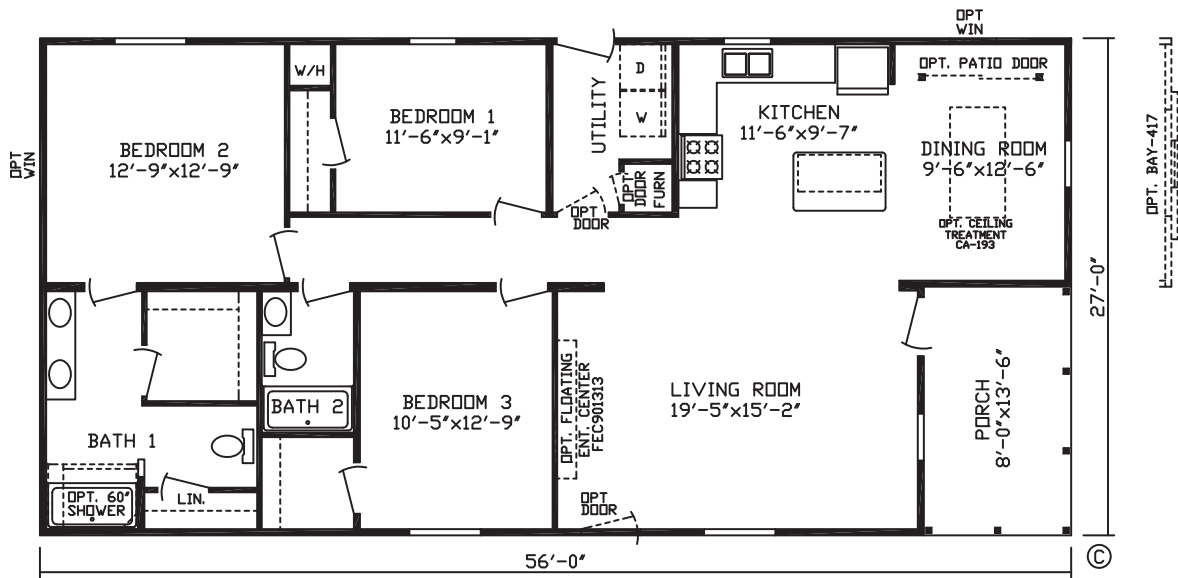
MODEL 24030

3 BR | 2 Bath | 1,404 sq ft



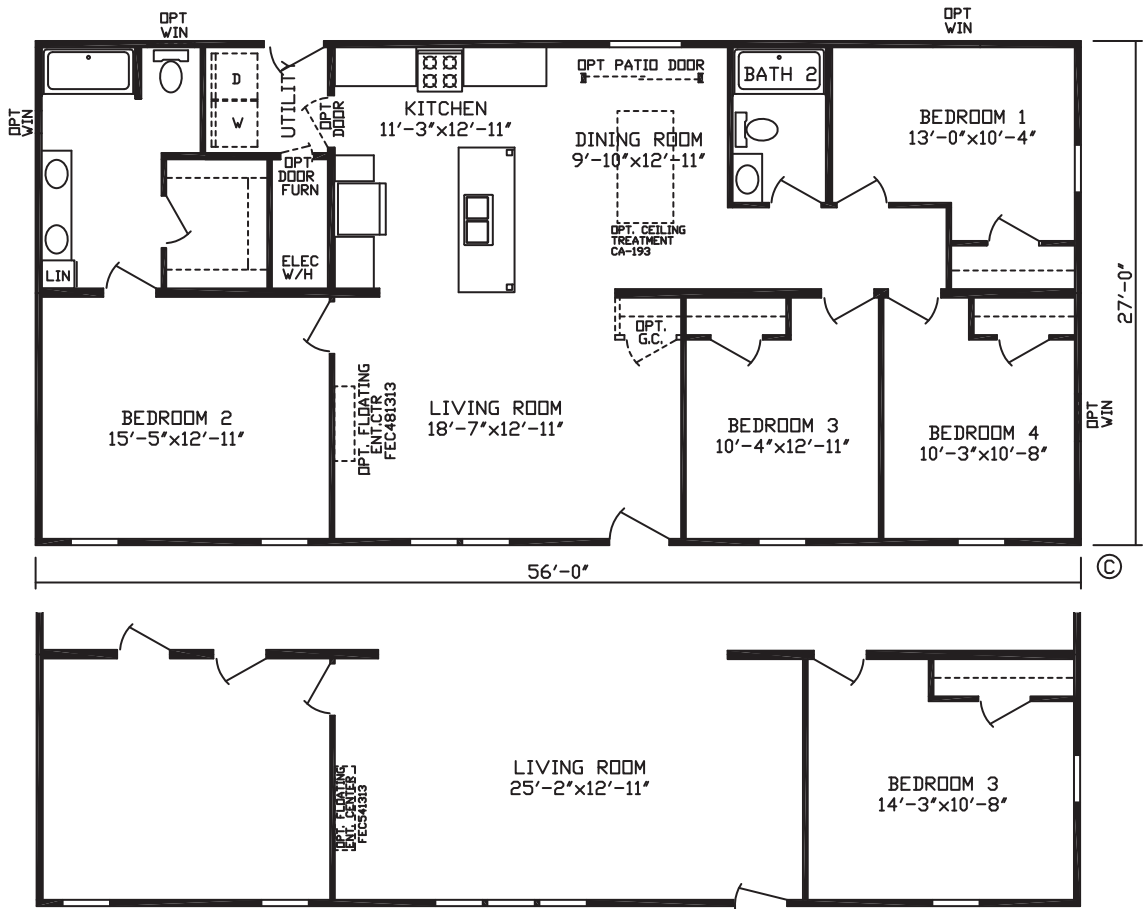
28 WIDES
Inspiration^{LE}

LAMONTE
 MODEL 24001
 3 BR | 2 Bath | 1,404 sq ft

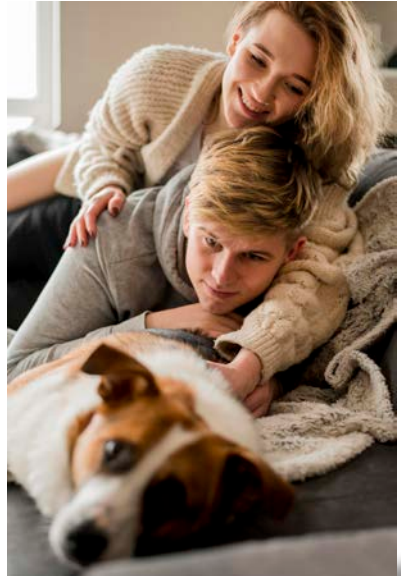


28 WIDES
Inspiration^{LE}

WILLIAMS
 MODEL 24006
 4 BR | 2 Bath | 1,512 sq ft



RO1 Opt 3-Bedroom

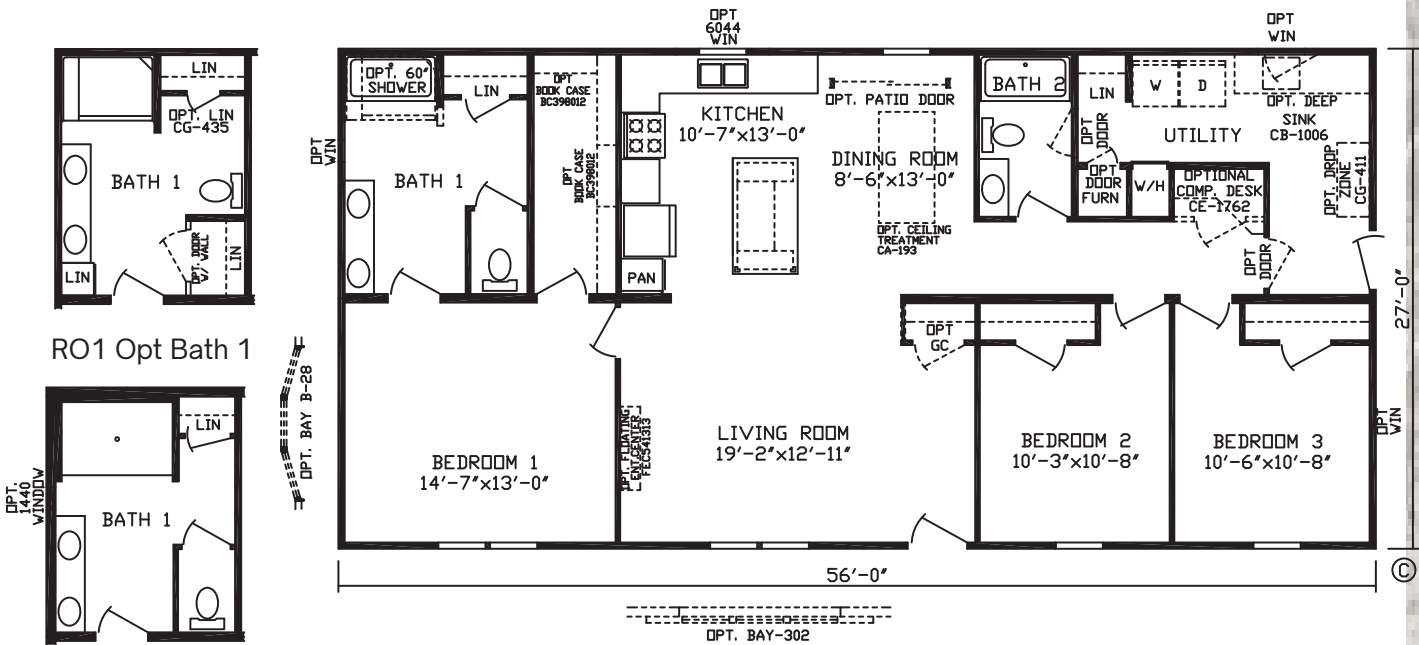




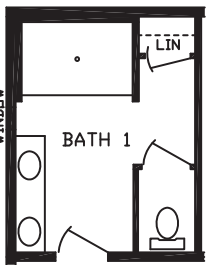
MANHATTAN

MODEL 24011

3 BR | 2 Bath | 1,512 sq ft



RO1 Opt Bath 1



RO5 Opt Bath 1

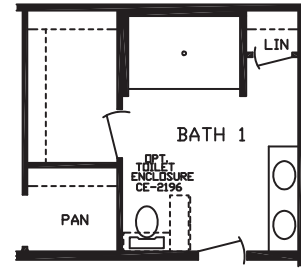


28 WIDES
Inspiration^{LE}

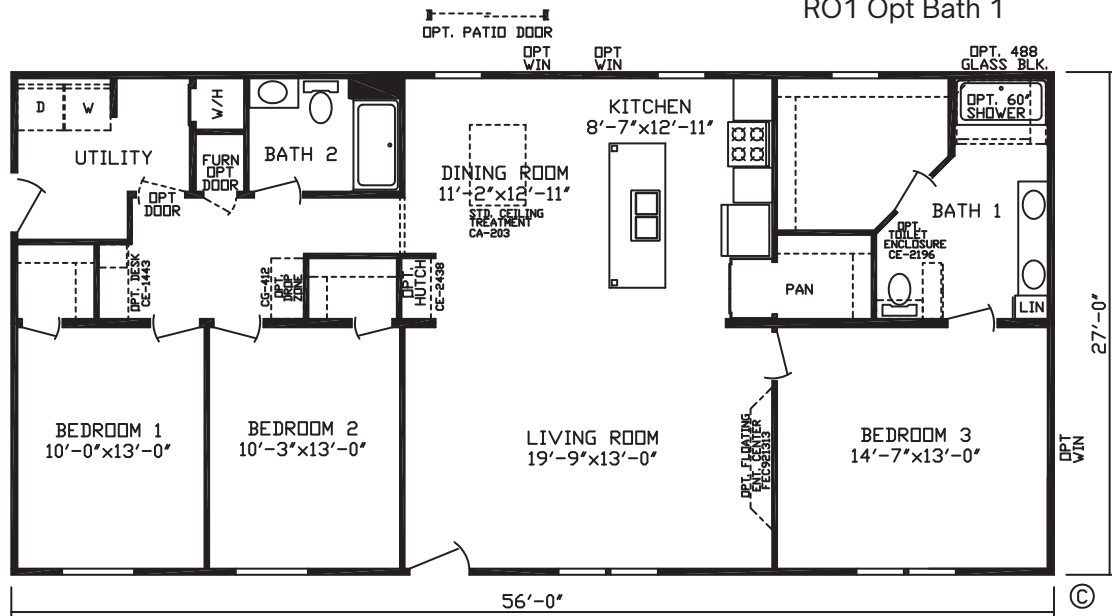
GODDARD

MODEL 24027

3 BR | 2 Bath | 1,512 sq ft

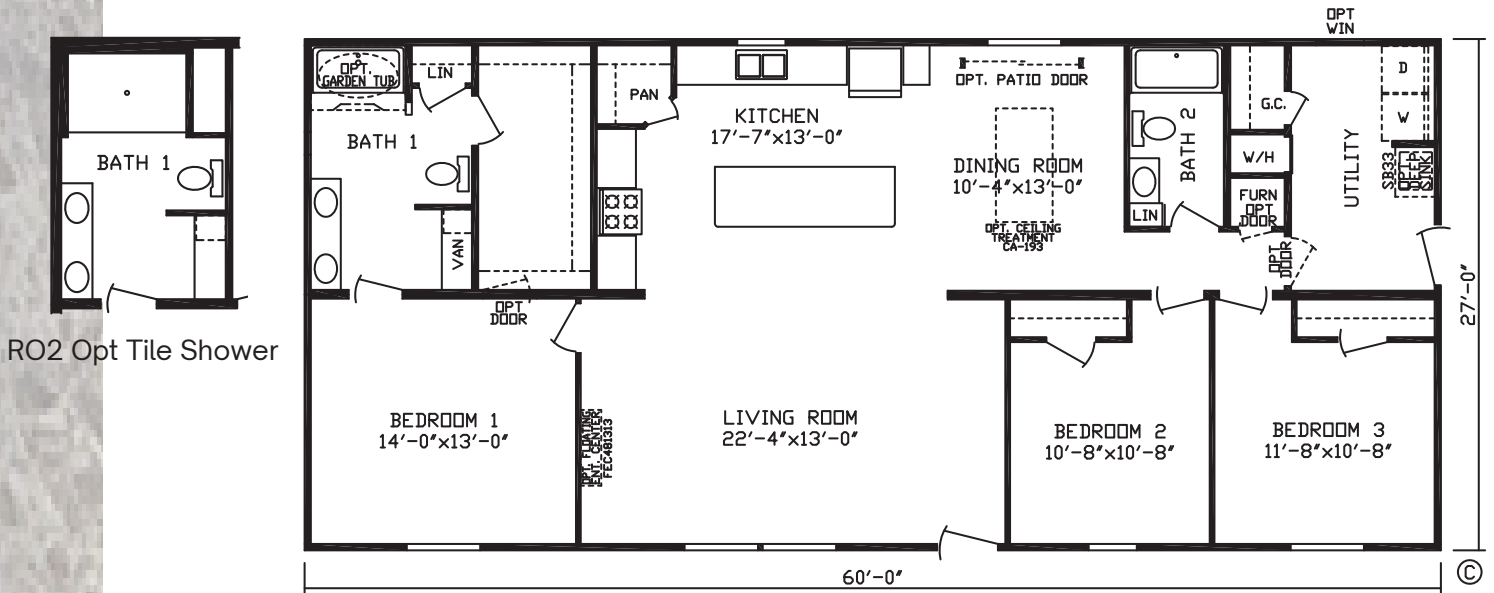


RO1 Opt Bath 1



28 WIDES
Inspiration^{LE}

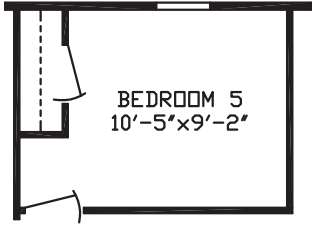
STRAUSS
 MODEL 24013
 3 BR | 2 Bath | 1,620 sq ft



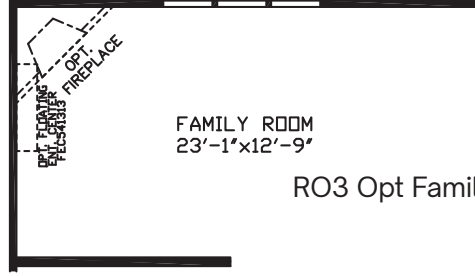
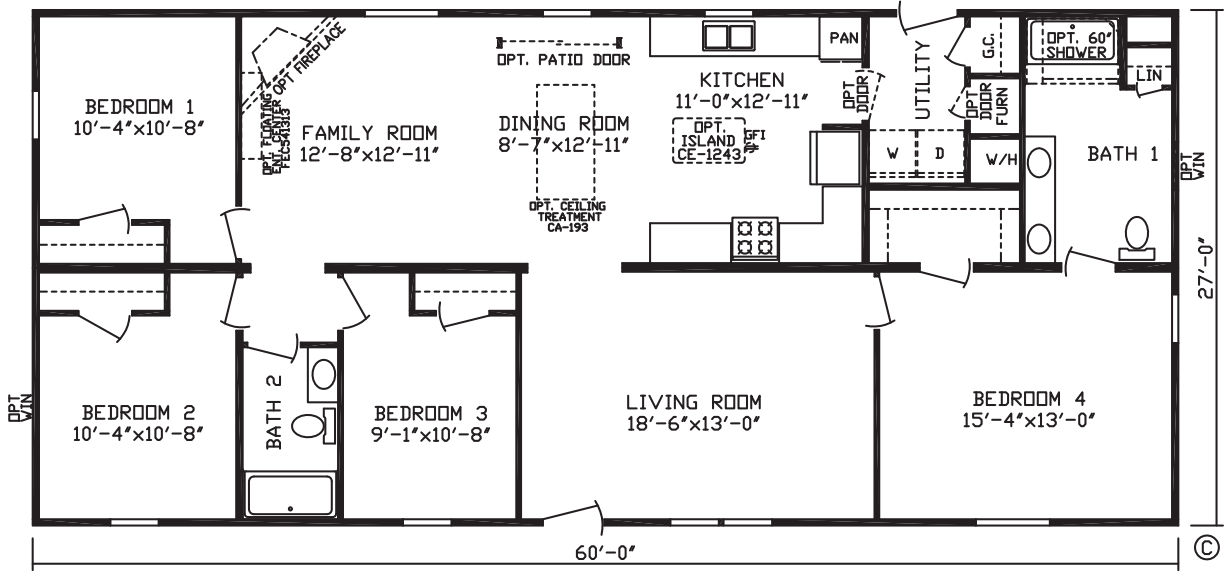
LEONARDO

MODEL 24025

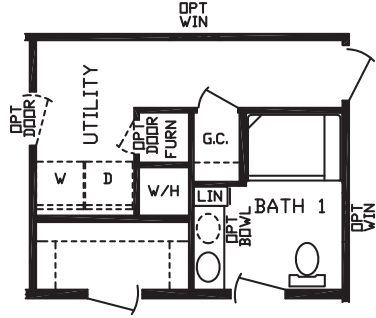
4 BR | 2 Bath | 1,620 sq ft



RO2 Opt Bedroom 5



RO3 Opt Family Room



RO1 Opt Bath 1

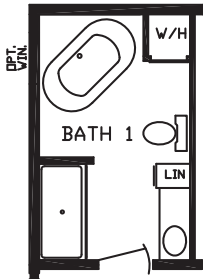


28 WIDES
Inspiration^{LE}

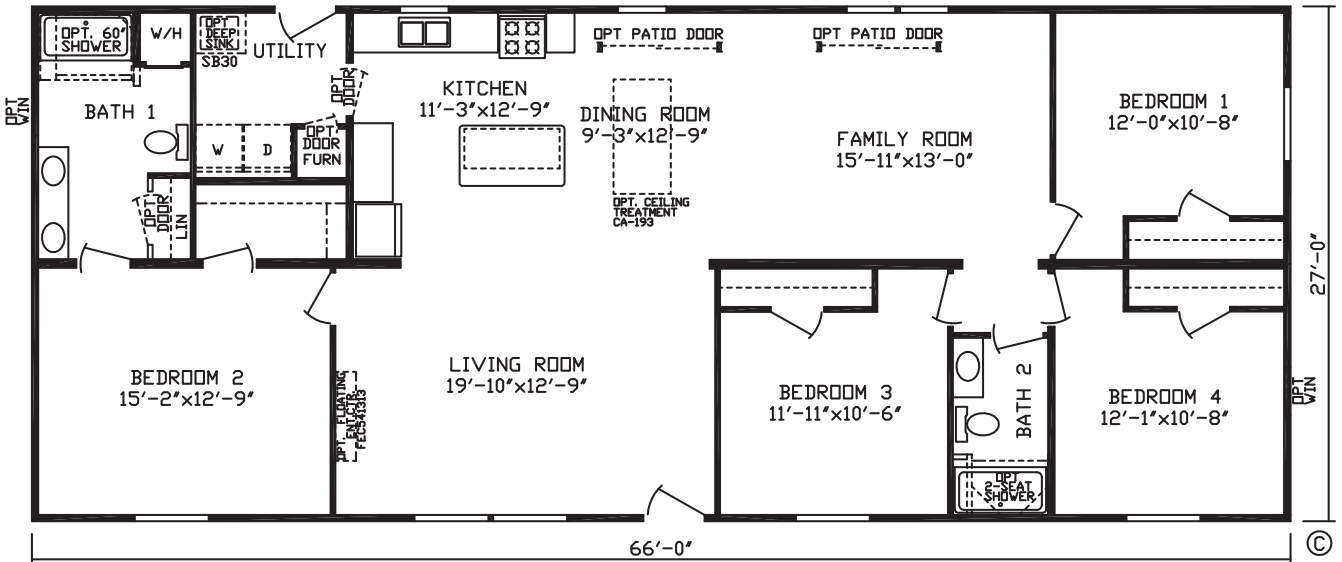
LUDWIG 2

MODEL 24034

4 BR | 2 Bath | 1,782 sq ft



RO1 Opt
 Bath 1



28 WIDES



Joplin Model 24030 Exterior

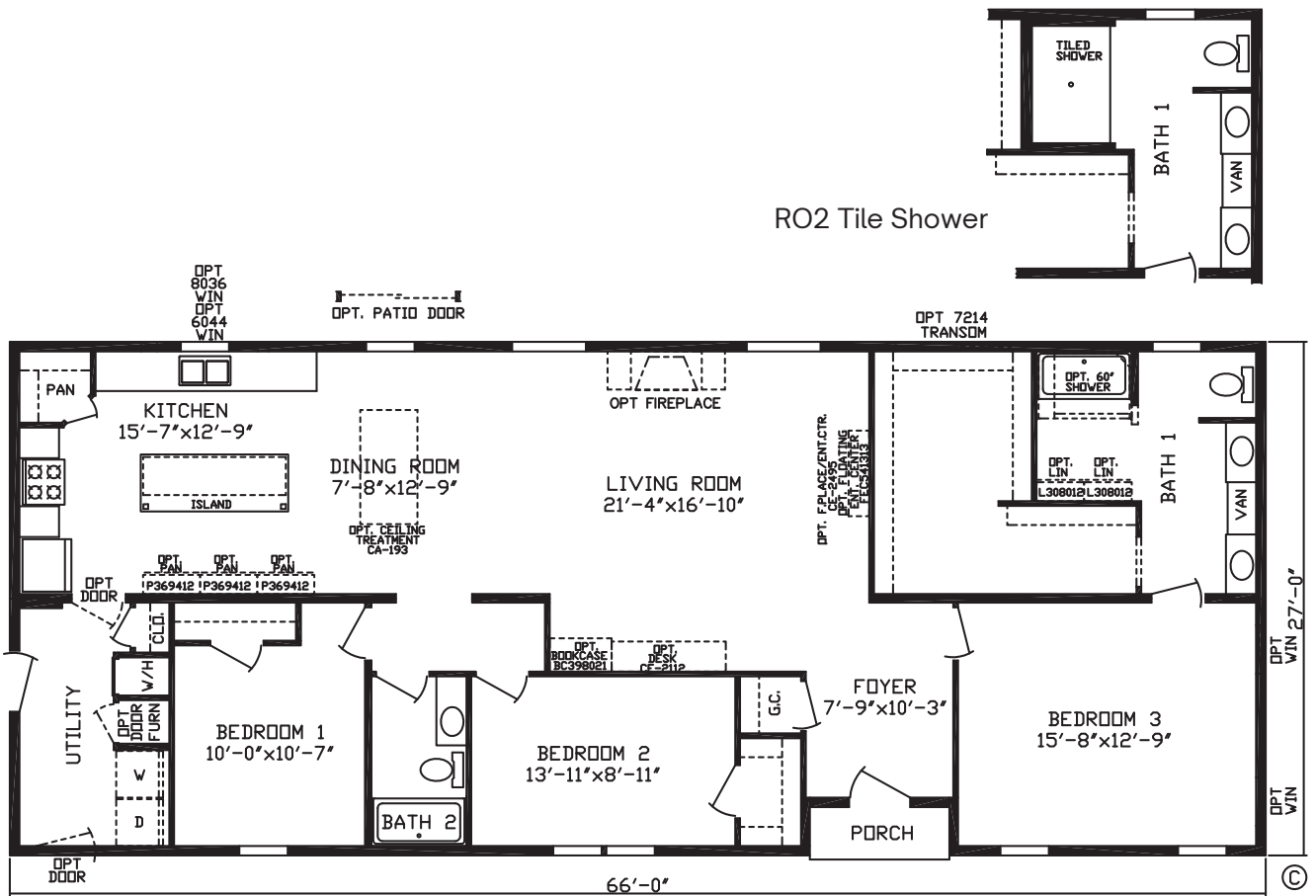


Ives Model 24033 Kitchen & Bath



28 WIDES
Inspiration^{LE}

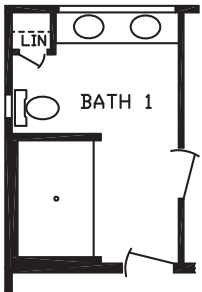
HOUGHTON
MODEL 24036
3 BR | 2 Bath | 1,782 sq ft



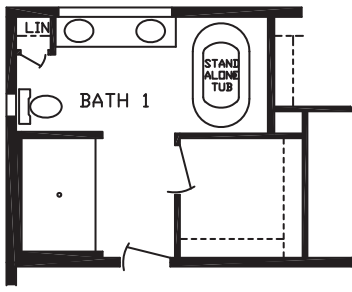
MORSE

MODEL 24022

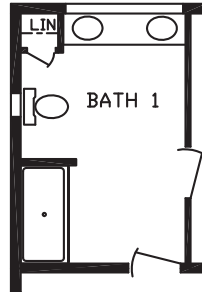
4 BR | 2 Bath | 1,890 sq ft



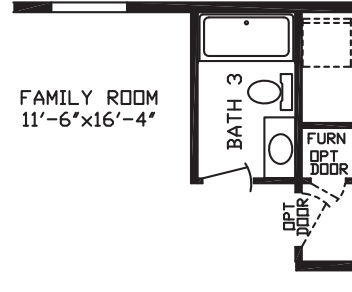
RO1 Opt Bath 1



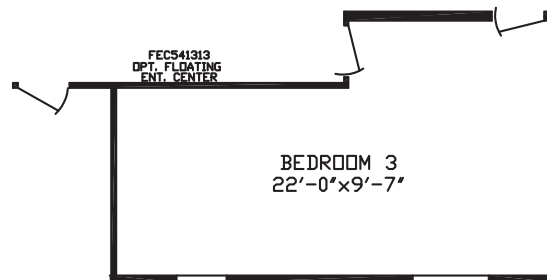
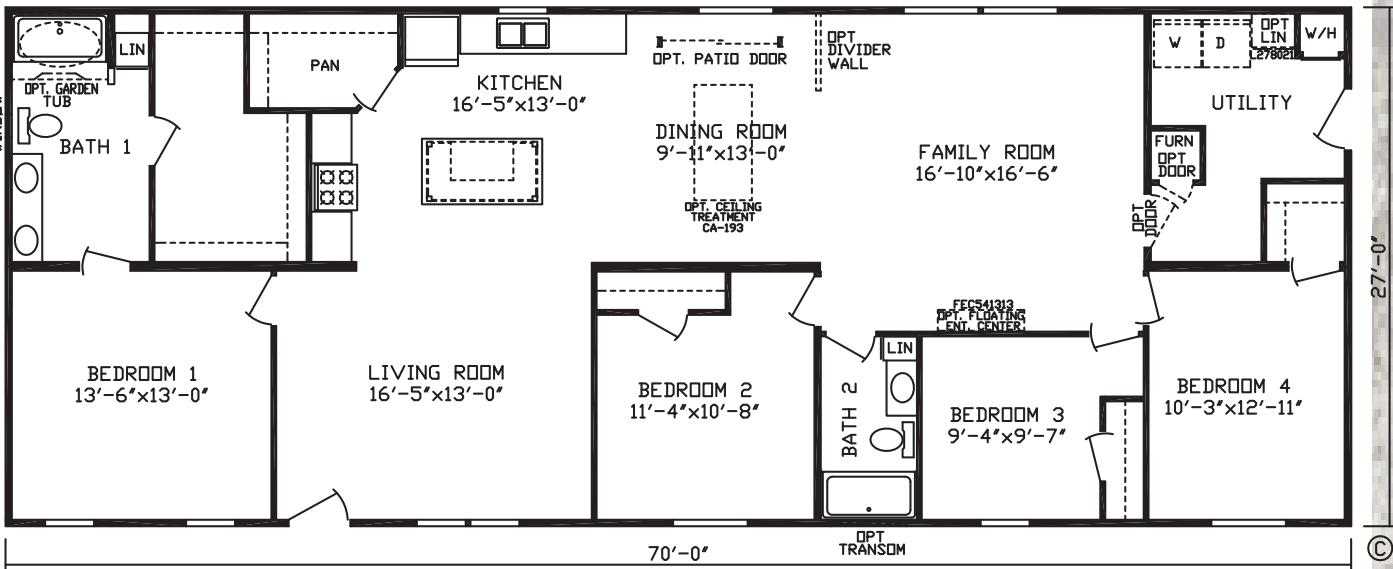
RO2 Bath 1 72" & Free-Standing Tub



RO7 Opt 3rd Bath



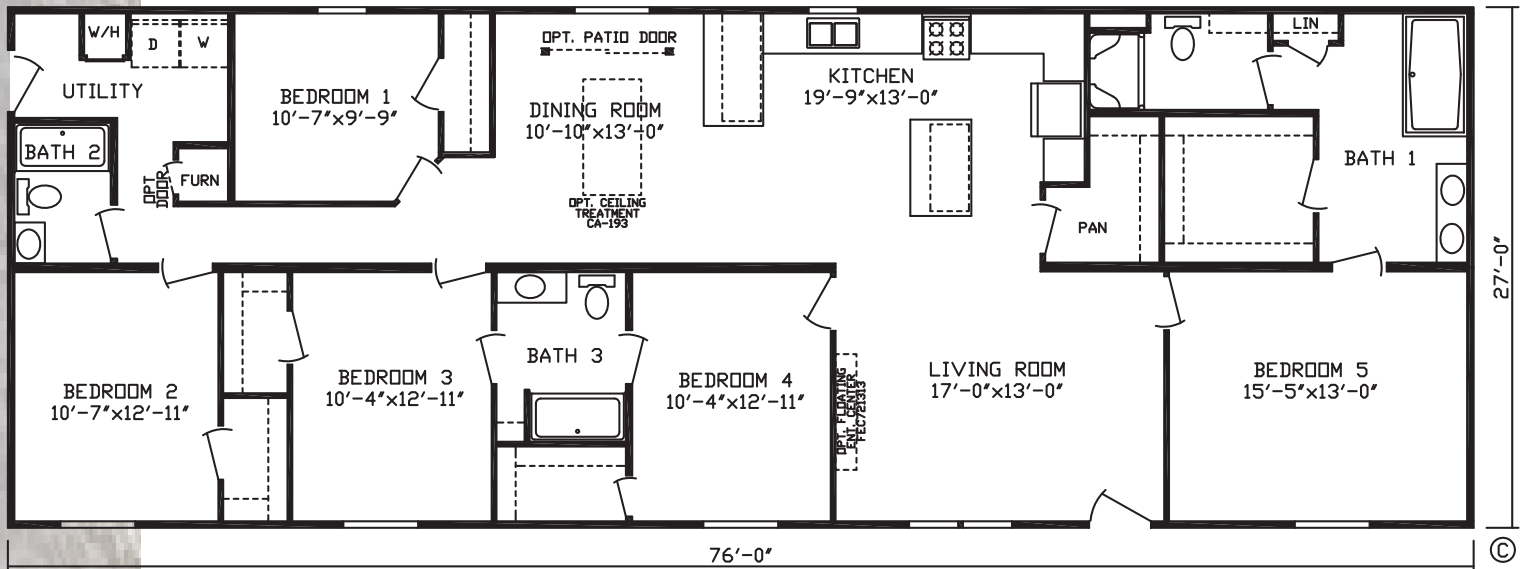
RO8 60" Tile Shower Bath



RO5 Opt 3 Bedroom

28 WIDES
Inspiration^{LE}

COLLIER
MODEL 24010
5 BR | 3 Bath | 2,052 sq ft



28 WIDES

Morse Model 24022 Kitchen

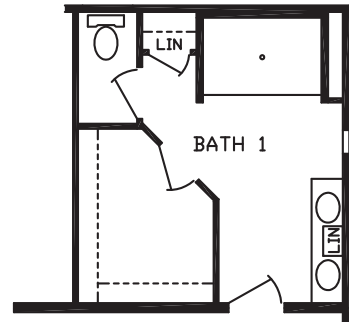


32 WIDE
Inspiration^{LE}

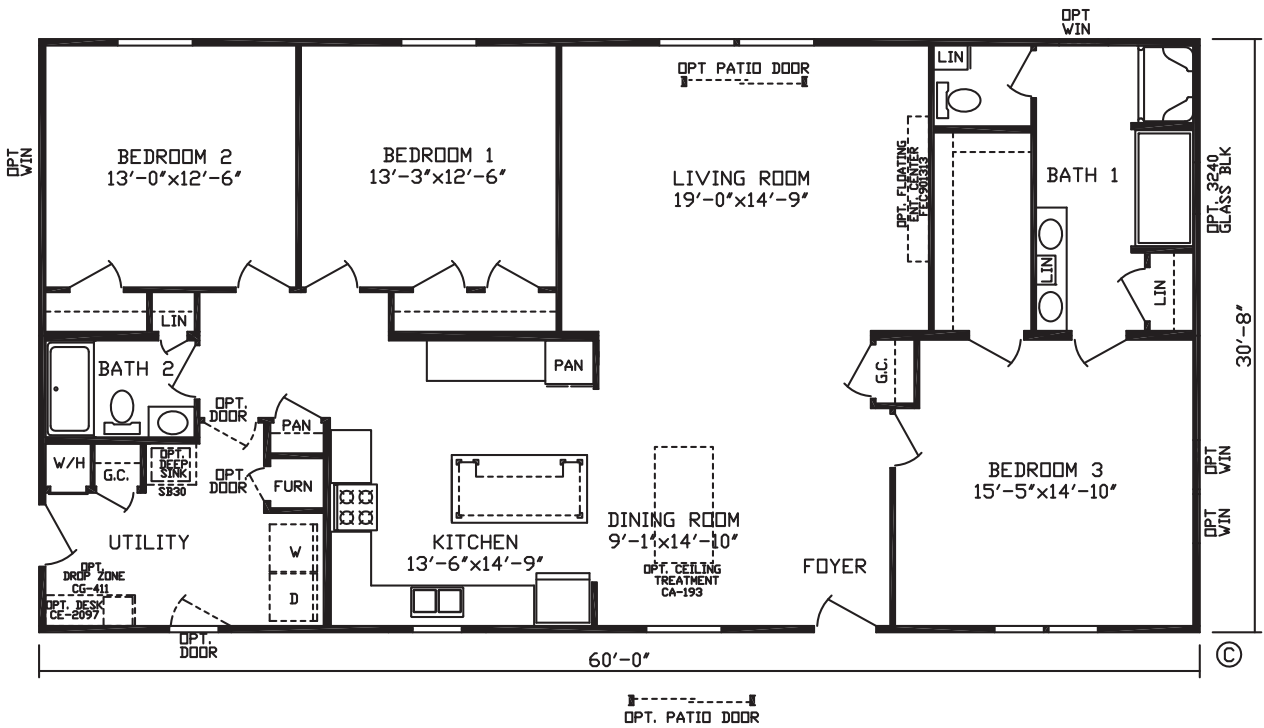
REYNOLDS

MODEL 24029

3 BR | 2 Bath | 1,840 sq ft



RO1 Opt Bath



Inspiration^{LE}

DOUBLE WIDE HOMES Standard Features

Energy Saving Standard Features

- 7/16 OSB Exterior Sheathing
- R-29 Roof Insulation
- Gas Furnace
- Positive Operating System

Exterior & Construction

- Nominal 3/12 Roof Pitch
- 8' Sidewall Height w/Flat Ceiling
- Rafters 24" O.C.
- 16" O.C. Floor Joists
- 19/32" Tongue & Groove 4'x8' OSB Floor Decking
- R-11 Floor Insulation
- Tamko 25 Year Shingled Roof
- Royal Double 4" Dutch Vinyl Lap Siding
- Ice & Water Barrier
- Exterior Weather Wrap
- Shutters Doorside
- 2x4 Exterior Walls

Floor Coverings

- Shaw® Take Away Carpet
- Congoleum® Roll Goods
- Rebond Carpet Pad
- Roll Goods in Baths, Kitchen, Dining Room, Utility, Foyer & Some Bedrooms
- Tack Strip Carpet Installation in Bedrooms & Halls
- Carpet Bar Where Applicable

Electrical

- Exterior GFI Weather Resistant Receptacle on Sidewall
- GFI Bath & Kitchen Receptacles
- Smoke & CO2 Alarms
- Wire & Vent for Dryer
- Rust Coach Light at Front & Rear Door
- Recessed LED Can Lights — Dining Room, Bedrooms, 1 in Kitchen, 1 at Kitchen Sink
- 100 AMP Service

Décor

- 1/2" Decorative Vinyl on Gypsum Walls
- Textured Stippled Ceilings
- 2-3/4" Brick Molding in Living Room, Dining Room, Kitchen & Hall w/Flat Trim in Remainder of Home
- 1-1/2" Door & Window Casing
- Mini Blinds Throughout
- Fabric Valances in Living Room & Bedrooms

Plumbing

- Single Lever Bath Tub Faucet w/Shower Head
- Plumbing for Washer
- 30 Gallon Electric Water Heater
- 7" Deep Stainless Steel Kitchen Sink
- High Arc Kitchen Faucet w/Pull-Down
- Main Water Shut-off Below Floor
- Water Heater Access Panel (Per Print)

Baths

- 1-Piece Fiberglass Tub / Shower in Baths
- Pop-Up Drains on Bath Sinks w/Overflows
- Power Exhaust Fan
- Formica Backsplash
- Pencil-Edge Mirrors
- Porcelain Lav

Doors and Windows

- Easy Clean Tilt-Out Sash, Single-Hung Windows, Non Gridded
- Kinro® White Low-E Vinyl Windows
- 38" x 82" Decorator 6-Panel Front Door
- 38" x 82" 1/2-Lite Rear Door w/Deadbolt
- Dead Bolt Security Lock on Front Door
- Floor Mounted Door Stops
- Triple Hinged Interior Doors
- Pre-Hung 2-Panel White Interior Doors
- Nickel Interior Door Knobs

Cabinetry

- 42" Overhead Kitchen Cabinets
- Shaker Style Wrapped Cabinetry w/Wrapped Stiles
- Hidden Hinges
- Dove Tail Drawer Construction
- Side Mounted Drawer Guides
- Formica Kitchen Backsplash
- Shelf in Washer / Dryer Area

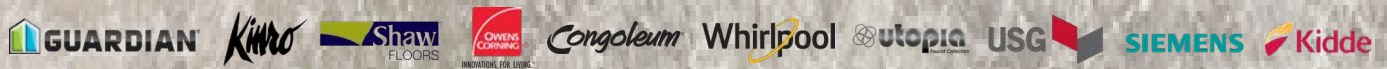
Appliances

- S.S. 18 CF Frost Free Refrigerator
- S.S. 30" Standard Gas Range
- S.S. Euro Range Hood



2181 East Market Street
Nappanee, IN 46550

Where *exceptional*
meets **affordable.**™



Note: Cavco Nappanee reserves the right to make changes in price, colors, materials, components and specifications and to discontinue models at any time; without notice or obligation. Cavco Nappanee assumes no responsibility for any error in type or print reproduction of specifications or floor plans in this brochure. ©2026 Cavco Nappanee, ALL RIGHTS RESERVED, Rev 03/2026



CavcoNappanee.com